

# TOWER 56

PLAZA DISTRICT | 126 E 56

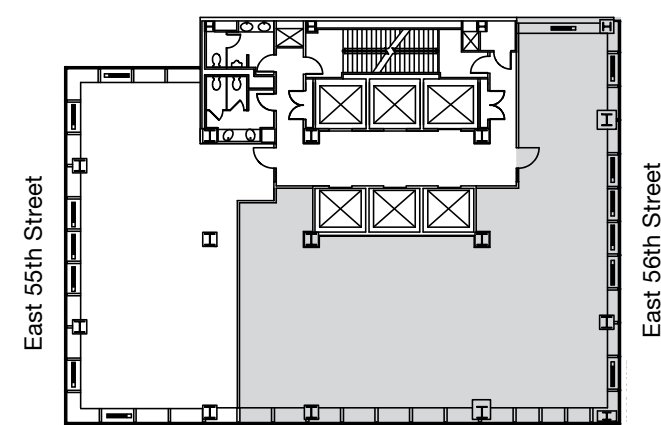
## Suite 1220

Prebuilt Under Construction

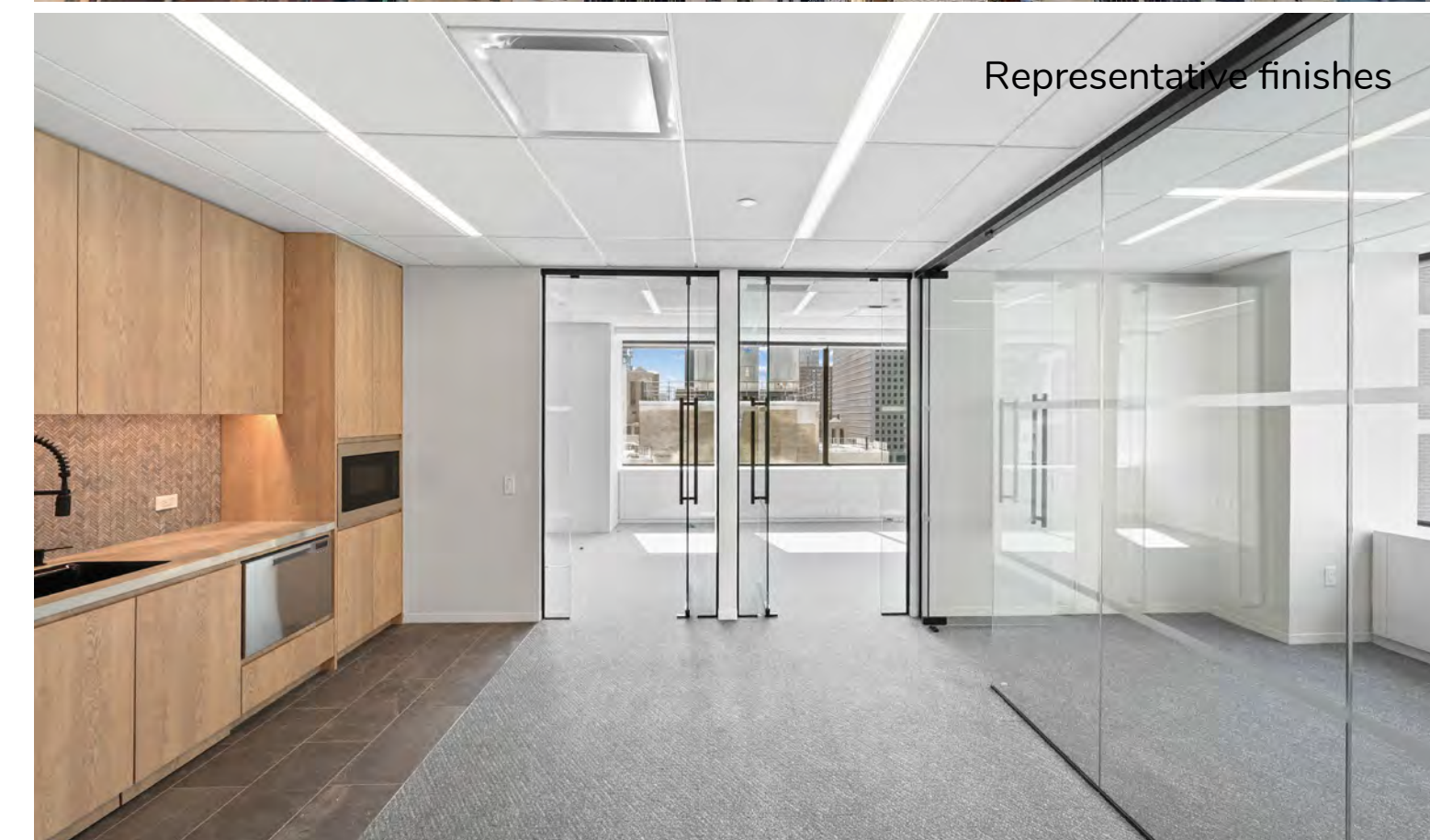
3,502 RSF

- 3 Private Offices
- 12 Open Area
- 10 Flex Area
- 1 Reception
- 29 Total Headcount**

- 1 Reception
- 1 Conference Room
- 1 Pantry
- 1 I.T.



East 56th Street



Sean Kearns | 212.984.6635 | sean.kearns@cbre.com

Alice Fair | 212.895.0985 | alice.fair@cbre.com

Graham Walter | 212.984.8059 | graham.walter@cbre.com



© 2023 CBRE, Inc. All rights reserved. This information has been obtained from sources believed reliable, but has not been verified for accuracy or completeness. You should conduct a careful, independent investigation of the property and verify all information. Any reliance on this information is solely at your own risk. CBRE and the CBRE logo are service marks of CBRE, Inc. All other marks displayed on this document are the property of their respective owners, and the use of such logos does not imply any affiliation with or endorsement of CBRE.

